

# Research Summary: Community Partner Coauthorship for Increased Implementation Science Impact

- Community partners improve research when engaged at every stage.
- However, they are rarely part of writing and publishing research - only 30% of partnered studies include community partners in dissemination.
- This paper presents a case example where a structured approach led to 92% of published papers including a community partner.



Scan QR code to read the full paper!



## WHO PARTICIPATED

- 21 health center leaders ranging from physician assistant to medical director to quality manager.
- Researchers working on cancer prevention and implementation science.

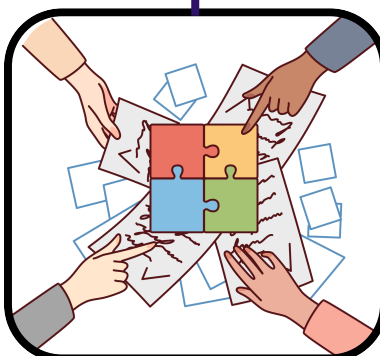
## WHAT WE DID

1. **Establish Coauthorship Policy** – Define guidelines and expectations for including community partners on papers.
2. **Identify Coauthor Opportunities Early** – Include partner co-authorship in discussions at the start of the project.
3. **Develop Tailored Co-authorship Invitation** – Share summary of paper idea and specific partner contributions in ask to ensure clear expectations
4. **Host Introductory Meetings** – Explain roles, timelines, and expectations for coauthors.
5. **Support New Coauthors** – Provide guidance on writing, submission, and publishing while ensuring bidirectional communication so all voices shape the manuscript.



## WHY THIS MATTERS

- Bridges the gap between research and practice.
- Recognizes the expertise of health center staff and their role in improving patient care.
- Builds research skills and creates career opportunities for community partners.



## WHAT'S NEXT

- Include more frontline staff, like CHWs and nurses, in writing.
- Expand approach beyond research with health center partners to include individuals in non-clinical community setting who may have different barriers to participation.
- Encourage funding and journal policies that promote coauthorship.

**By working and writing together, researchers and community partners can make research more meaningful and actionable for the communities they serve.**

