

# Master of Public Health in Clinical Effectiveness 2021 Graduate Outcomes

Report includes self-reported data and data collected by the Office of Career and Professional Development.

# 100%

Employed or continuing their education

# \$150,000

Median salary of our 2021 MPH-CLE graduates

## Percentage Employed By Sector

# 67%



Healthcare

# 16%



Academic

# 7%



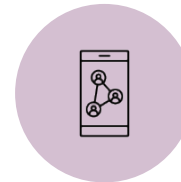
Self-Employed

# 5%



Government

# 4%



For Profit

## Sample Job Titles and Employers in Clinical Effectiveness

Job Titles	Employer
<ul style="list-style-type: none"><li>• Clinical Assistant Professor</li><li>• Fellow</li><li>• Hospitalist</li><li>• Physician</li><li>• Resident</li></ul>	<ul style="list-style-type: none"><li>• Beth Israel Deaconess Medical Center</li><li>• Boston Children's Hospital</li><li>• Emory School of Medicine</li><li>• Hospital of the University of Pennsylvania</li><li>• Massachusetts General Hospital</li></ul>



**SCHOOL OF PUBLIC HEALTH**  
Office of Career and Professional Development