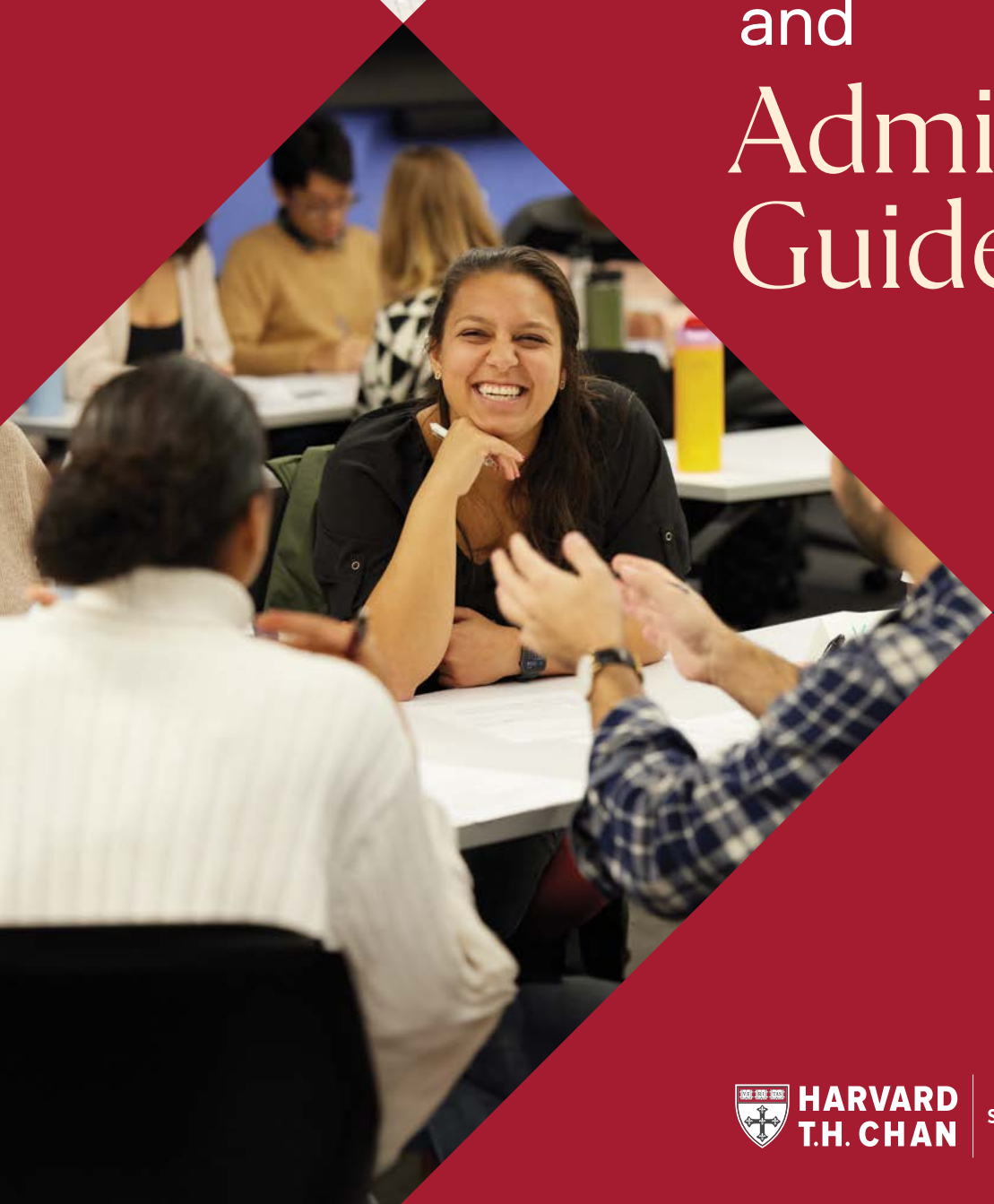




# Degree Programs and Admissions Guide



**HARVARD  
T.H. CHAN**

SCHOOL OF PUBLIC HEALTH





# Contents

2	DEAN'S WELCOME
3	WHO WE ARE
4	Our impact
8	YOUR HARVARD CHAN EXPERIENCE
12	Support and graduate outcomes
14	DEGREE PROGRAMS
15	Master of Public Health
18	Master of Science
20	Master in Health Care Management
20	Doctor of Public Health
22	Doctor of Philosophy
23	Joint and combined degrees
24	NON-DEGREE PROGRAMS
25	Non-degree programs
26	Summer programs
27	Executive and Continuing Education
28	PROGRAM DETAILS AND POLICIES
29	Program eligibility
29	Tuition and expenses
30	Fund your education
31	Policies

# Dean's welcome

Welcome to Harvard T.H. Chan School of Public Health!

In the pages that follow, you will learn what makes Harvard Chan School one of the best places in the world to gain the skills, experience, and support you need to advance your career in public health—and expand your impact on the world.

You will read about our innovative degree programs and thoughtful mentoring, our incredible internship and field learning opportunities, and the way our research translates into policies and programs that improve health and promote equity around the globe. You will learn about our rich extracurricular offerings, the many ways we support our students' careers, and the power of our global alumni network.

What's harder to convey in these pages is the spirit of our community. Our students, trainees, faculty, and staff are incredibly diverse in backgrounds, interests, experiences, and perspectives. Yet we are united by a steadfast commitment to building a world with health, dignity, and justice for all.

That shared sense of purpose is what makes the Harvard Chan community truly special. Here, you'll find people who will teach you and learn from you, support you and challenge you, collaborate with you and open doors for you. I speak from experience when I say that you will treasure the relationships you build here.

I hope you choose to join us at Harvard Chan School. I'm looking forward to welcoming you to our community!



**Andrea Baccarelli, MD, PhD**  
Dean of the Faculty  
Harvard T.H. Chan School of Public Health



# Who we are

## Our vision

Health, dignity, and justice for every human.

## Our mission

The Harvard T.H. Chan School of Public Health works to improve health and promote equity so all people can thrive.

Together, we:

- **DISCOVER:** Research drivers of health, disease, and inequity and develop powerful solutions.
- **TEACH:** Train creative leaders to identify, analyze, and tackle challenges to population health.
- **ENGAGE:** Collaborate with policymakers, practitioners, and the public to drive meaningful change.

## Principles of Citizenship

Our Principles of Citizenship reflect our commitment to building a healthy and inclusive School community.



Read the Principles  
[hsph.me/about](https://hsph.me/about)

## Harvard Chan School by the numbers



1,464  
students



39%  
students from outside the U.S.



497  
faculty



5  
degrees offered



9  
academic departments



9  
interdisciplinary concentrations



25+  
research centers



40+  
student clubs



15,000+  
incredible alumni

# Our impact

For more than a century, our faculty have been leading the charge to build a healthier world. A few examples:

## Environmental health

**1980s:** Demonstrated a strong link between air pollution and mortality via the landmark Six Cities Study, which led to a strengthening of the U.S. Clean Air Act.

**TODAY:** Tamarra James-Todd and Shruthi Mahalingaiah are documenting how exposure to the chemicals in beauty products and other everyday items may damage reproductive health.

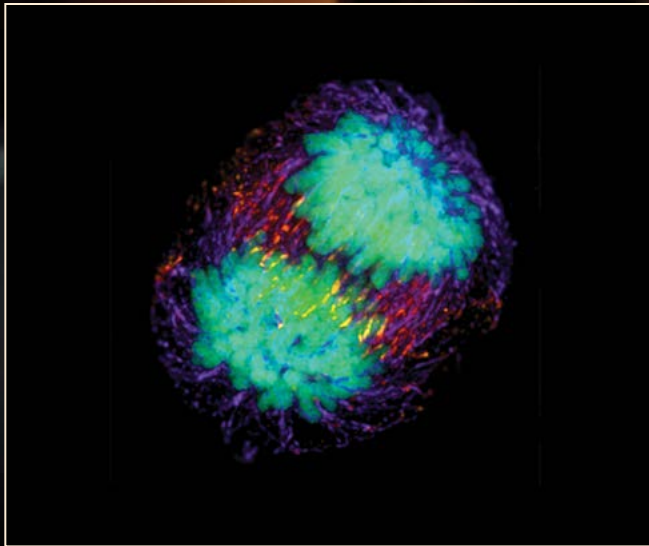


## Health policy

**1970s:** Launched the discipline now known as health decision science by pioneering a new method for evaluating the cost-effectiveness of medical interventions.

**TODAY:** Ankur Pandya analyzes the costs and benefits of health policies—including COVID mitigation strategies—to maximize population health.





## Cancer biology

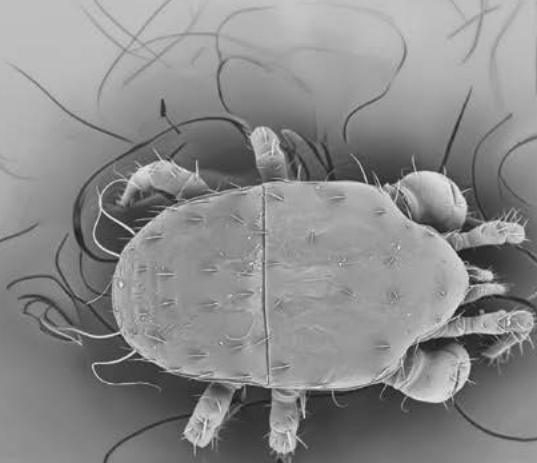
**1990s:** Launched the field of cancer genetics by identifying an inheritable mutation in a tumor suppressor gene that puts entire families at high risk of cancer.

**TODAY:** Jessalyn Ubellacker is uncovering new insights about how cancer cells spread—and testing new approaches to stopping metastasis.

## Global health

**1970s:** Unlocked the mystery of Lyme disease by discovering the role of the deer tick in transmission.

**TODAY:** Marcia Castro and Dyann Wirth are promoting a powerful multidisciplinary approach to conquering malaria, working with colleagues around the world on vaccine development, policy analysis, and online training for public health officials.





## Discrimination

**1990s:** Highlighted the powerful impact of structural racism on health and advocated for solutions to advance equity.

**TODAY:** Brittany Charlton is training the next generation of researchers to assess and address health disparities affecting the LGBTQ+ community.



## Nutrition

**1990s:** Demonstrated the danger of trans fats, leading to landmark regulation to keep artificial trans fats out of foods.

**TODAY:** Mingyang Song is exposing the risks of ultra-processed foods, from doughnuts to hot dogs.





## Infectious disease

**1940s:** Paved the way for development of the polio vaccine by discovering how to grow poliovirus in non-nerve tissue.

**TODAY:** Kizzmekia Corbett-Helaire, whose work was pivotal to the development of the mRNA COVID vaccine, is laying the groundwork for new vaccines and therapeutic antibodies to get ahead of future pandemic threats.

## Communication

**1980s:** Launched the “Designated Driver” campaign in the U.S., which led to a steep drop in deaths from drunk driving.

**TODAY:** Amanda Yarnell is bringing together TikTok creators and Harvard researchers to disseminate evidence-based mental health research to a broad audience.



# Your Harvard Chan experience



## Your coursework

Classes at Harvard Chan School are challenging, engaging, relevant—and sometimes surprising.

You'll learn the skills you need to advance your career. And you'll take courses that may open entirely new worlds of possibility.

Nine interdisciplinary concentrations, available to students in most degree programs, let you dive deep with peers who share your interest in topics such as maternal and child health, humanitarian studies, public health leadership, and climate change.

And if that's not enough, you can cross-register for classes at other Harvard graduate schools.

*"The community was the most rewarding part. Having really supportive mentors who are experts in what they do and who champion students, in a friendly environment where there are genuine friendships between trainees and professors ... it has shaped what I've been able to accomplish."*

—Sydney Stanley, PhD '23

## Your mentors

At Harvard Chan School, you'll find many mentors to support you, challenge you, and open doors for you.

In addition to world-renowned researchers, our faculty includes many professors of the practice who bring years of experience in government leadership, health care settings, nonprofit work, and other industries. Our Menschel Senior Leadership program regularly brings in international health ministers and U.S. governors and mayors to teach courses and mentor students.

You'll also find your peers and alumni an invaluable resource as you build a network to advance your career and expand your impact in public health.



Watch students and alumni talk about their mentors

[hsph.me/ytadvice](https://hsph.me/ytadvice)

## THE COURSE

Narrative Leadership:  
Using Storytelling to  
Mobilize Collective  
Action in Public Health

## THE IMPACT

"The power of the course for me was that I stopped trying to mold what I write into this idea of what I thought people expected of me. Moving forward as a leader, I'm not scared to be myself anymore."

—Kiran Zindani, MPH '24

## THE COURSE

Large-Scale Effective-  
ness Evaluations

## THE IMPACT

"It showed me how critical and cautious we must be in figuring out if our interventions are effective and acceptable. I'll always carry this lesson with me."

—Valencia Lambert, SM '24



## HARVARD CHAN COMMUNITY DAY OF SERVICE

Each fall, the Harvard Chan Community Day of Service brings students, staff, and faculty to work with local organizations on projects ranging from gardening in local parks to serving meals in shelters to building harm-reduction kits.



Watch our 2023 Day  
of Service recap

[hsph.me/dos23](https://hsph.me/dos23)

## Your community

How would we describe the Harvard Chan community? Curious and collaborative. Driven and dedicated. Kind. Smart. Supportive. And above all, passionate.

Each year, about 60% of our students are U.S. citizens or permanent residents, and about 40% come from other countries around the world. Our faculty and staff also bring diverse backgrounds, experiences, and perspectives.

This unique community will enrich your learning and help you build an unparalleled global network of friends, mentors, and colleagues.

You'll also find immense value in the Harvard Chan alumni network—15,000+ leading voices in public health, working across every discipline, in every corner of the globe.

*“One of the reasons I was drawn to Harvard Chan School was the opportunity to join an amazing network. I had the sense—and this has been confirmed—that for every field of public health you're interested in, there's either a world leader here or someone who knows a world leader.”*

— Jeremy Cygler, MPH '24

## Your research

Whatever your interest, you'll find a place to pursue it at Harvard Chan School.

With more than two dozen research centers and scores of faculty labs, we have world-leading research strengths across the bench sciences, data sciences, and social sciences. Our research centers deliver pioneering insights on topics ranging from mindfulness to the microbiome, from gun violence to risk analysis to communicable disease dynamics—and much more.

You'll have the opportunity to work in world-class labs on our campus in Boston or to join your professors in community-engaged research both locally and globally. Each year, our faculty and students work in countries around the world, from Australia to Zimbabwe.

## Your fieldwork

Our MPH and DrPH students complete field practicums with organizations in Boston and around the globe.

You might find yourself documenting shifts in Ghana's fisheries, developing policies to address the crisis in teen mental health, quantifying the impact of extreme heat on cardiovascular disease, leading art therapy workshops in Ecuador ... the possibilities are endless.

Our outstanding field education staff will help you find the right project to gain relevant skills and make valuable connections.



Addie Kimber, MPH '24, talks about her practicum with The Baker Center for Children and Families in Boston

[hsph.me/addie-kimber](https://hsph.me/addie-kimber)

*"The insights from my field experience, gathered through consultation with local communities and stakeholders across Ghana, are invaluable in shaping interventions and policy design for the country's fisheries management practices."*

— Idongesit Sampson, MPH '24

## Your extracurricular opportunities

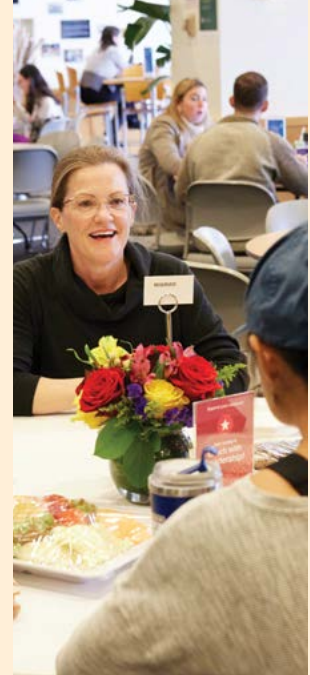
Dozens of student clubs and affinity groups will help you find your niche, whether you're into artificial intelligence or biotechnology, ping pong or ceramics.

Want a say in school governance? Run for office through the Harvard Chan Student Association (HCSA).

Interested in launching a startup? Find support at the storied Harvard Innovation Labs (iLab) or at the newer Harvard HealthLabs Accelerator (H2A), which helps early-stage entrepreneurs launch social impact ventures.

Eager to learn more about an unfamiliar subject or dive deeper into your field of study? A huge variety of symposia, workshops, fireside chats, and lectures are held every week, both on campus and online.

The Harvard Chan Studio hosts panels and chats with leaders in government, science, and business. The Office for Student Affairs hosts signature events like iNight and Spring Fling and helps student organizations and HCSA plan activities, conferences, and standout social events. The Office of Diversity and Inclusion also holds discussions, celebrations, and film screenings.



## CROSSROADS CONVERSATIONS

Harvard Chan School regularly hosts "Crossroads Dinners," bringing together students, alumni, and faculty to talk about how to recognize, navigate, and learn from pivotal moments in their careers. The discussions are candid, informal, and revelatory.

"When you are at the start of your career, it is easy to believe that you are supposed to have your life completely figured out," James Frater, MPH '24, said after attending a Crossroads Dinner. "It was very encouraging to hear from others who have not always been clear about their path but have managed to create a career that aligns with who they are and what they care about."



## Support and resources

Harvard Chan School provides the resources and services you need to succeed, both inside and outside the classroom. Among them:

- Career and professional development
- Tutoring and learning support
- Disability accommodations
- IT and technology support
- Housing resources
- Academic coaching

## Career services

The Office of Career and Professional Development will help you identify your strengths, explore roles and industries suited to your skills, polish your résumé, and make sure you are fully prepared for interview and salary negotiations. Our offerings include:

- **Career Toolkit**, a comprehensive guide to support you in career reflection, exploration, skill development, and networking.
- **One-on-one career coaching** tailored to your needs.
- **Industry weeks** with employer information sessions, alumni panels, and networking breakfasts to introduce you to an array of career paths.
- **Workshops** to prepare you for every stage of the job search process.
- **CareerConnect**, which helps students and alumni identify full- and part-time jobs as well as practicum opportunities.

## Graduate outcomes

### PERCENTAGE EMPLOYED BY SECTOR:



45% hospitals/health care



23% academia



20% private sector, including consulting and biopharma



8% government



3% nonprofit, including community advocacy and NGOs



<1% self-employed and other

95%

95% employed or continuing their education within 12 months of graduation

## Diversity and dialogue

We're committed to building an inclusive community that welcomes and supports individuals with a broad range of lived experiences, cultures, identities, backgrounds, ideas, and perspectives.

A new initiative, Harvard Chan LEADs (Learn & Engage Across Differences), organizes trainings aimed at building those critical skills. Our Office of Diversity and Inclusion also hosts regular workshops, film screenings, and discussions to nurture a culture of belonging and reinforce our commitment to inclusive excellence.



Learn more about our commitment

[hsph.me/diversity-initiatives](https://hsph.me/diversity-initiatives)

*“One of my most important goals as Dean is to nurture a culture of belonging at Harvard Chan School. That means embracing diversity in all its forms, including diversity of viewpoints. It means not just accepting but actively seeking to learn from people with different perspectives and life experiences.”*

— Dean Andrea Baccarelli

## Life in Boston

Studying in Boston opens a world of opportunities.

Our campus is steps from renowned hospitals and research institutes and surrounded by biotech and pharma pioneers.

In your free time, there's plenty to do, whether you like sports, music, theater, food, history, art, the great outdoors... or all the above.

As a student at Harvard Chan School, you'll enjoy discounts on performing arts tickets and other events. Your Harvard ID will give you free entrance to all Harvard museums as well as the Museum of Fine Arts, the Isabella Stewart Gardner Museum, and the Institute of Contemporary Art. You'll also have access to events and activities across Harvard.

And if you're looking for an escape from the city, Boston is an easy drive from some of the most scenic places in the U.S., from the beautiful beaches of Cape Cod and the rugged coastline of Maine to the quaint towns and craggy mountains of Vermont and New Hampshire.



# Degree programs

We offer both practice- and research-oriented degrees. Here's a quick chart to help you find the right program:

	PROFESSIONAL AND/OR PRACTICE-ORIENTED	ACADEMIC AND/OR RESEARCH-ORIENTED
<b>MASTER'S</b>	Master of Public Health Master in Health Care Management	Master of Science
<b>DOCTORAL</b>	Doctor of Public Health	Doctor of Philosophy



Please visit our website for full information about our degree programs, including eligibility requirements.

[hsph.me/programs](https://hsph.me/programs)





# Master of Public Health

The Master of Public Health (MPH) degree gives you the intellectual foundation and specialized skills you need to lead change in communities around the world.

Our MPH graduates have achieved remarkable things: Developing life-saving vaccines, leading global efforts to eradicate diseases such as smallpox and Guinea

worm disease, running government agencies, and serving as physicians, policymakers, and community advocates.

In addition to our on-campus programs, we offer an online MPH Generalist degree and a hybrid MPH in Epidemiology.

---

## MPH 65-credit On campus Full-time or part-time

### ELIGIBILITY

For individuals with a bachelor's degree who will have at least two years of contiguous full-time work experience in an area relevant to public health when the program starts.

### FIELDS OF STUDY

Health and Social Behavior • Health Management • Health Policy

### PROGRAM LENGTH

1.5 years full-time; three semesters with a summer practicum after the first two semesters

---

## MPH 45-credit On campus Full-time or part-time

### ELIGIBILITY

For individuals with a bachelor's degree and at least five years of relevant experience in public health or a related field, or who already hold a graduate degree, or who are current medical or dental students who have completed their primary clinical year. You may also pursue the MPH-45 as part of a dual/joint degree.

### FIELDS OF STUDY

Clinical Effectiveness • Global Health • Health and Social Behavior • Health Management • Health Policy • Occupational and Environmental Health • Quantitative Methods

### PROGRAM LENGTH

One year full-time; completed in two semesters

---

## MPH Generalist Online Part-time

### ELIGIBILITY

For individuals with a bachelor's degree and at least five years of relevant experience, or a graduate degree.

### PROGRAM LENGTH

Two years part-time, with an expectation of 15–20 hours a week, including asynchronous lectures, individual and group projects, and homework

---

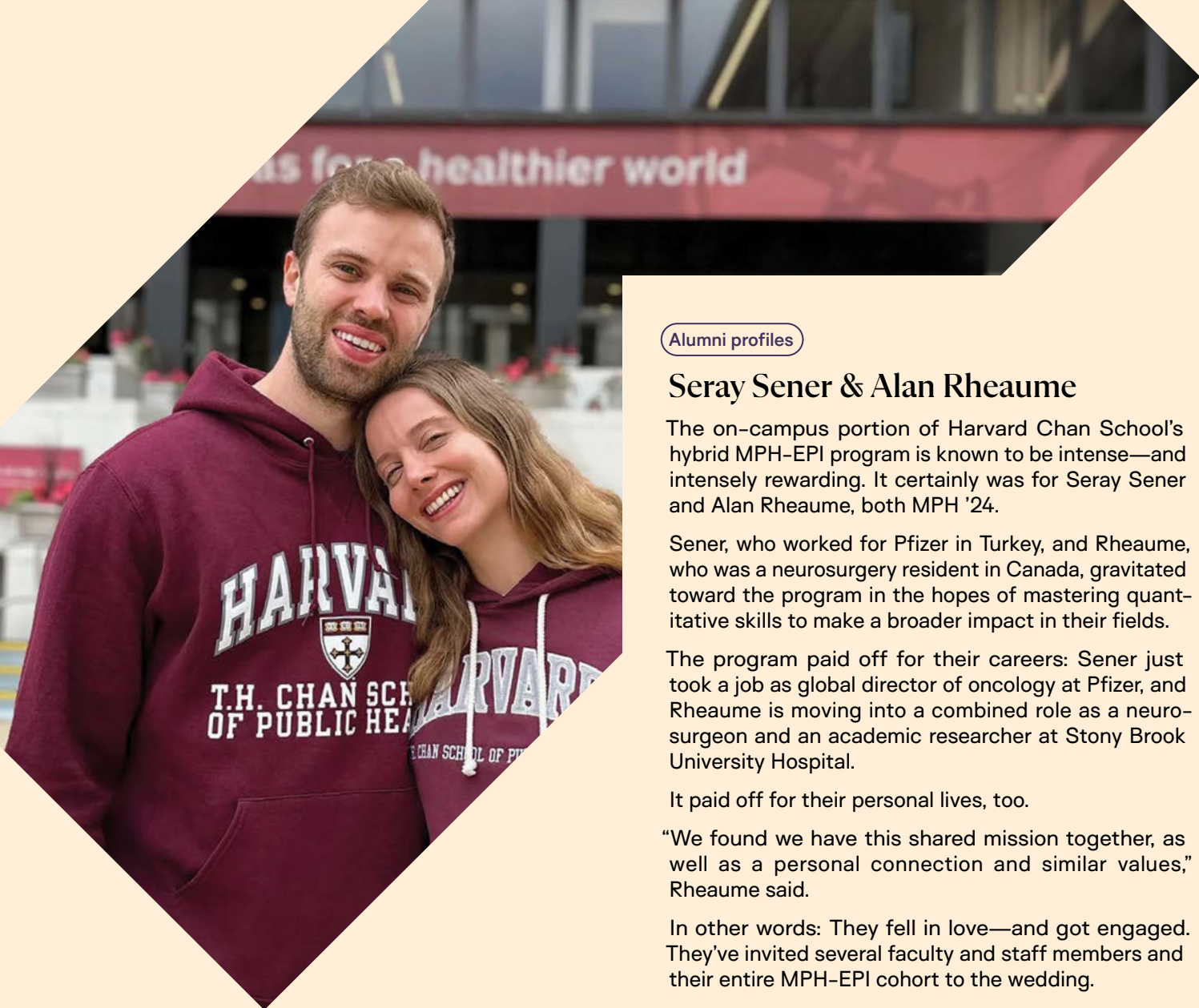
## MPH in Epidemiology Hybrid Low residency

### DESCRIPTION

For individuals with a bachelor's degree and at least five years of relevant experience, or a graduate degree.

### PROGRAM LENGTH

Two years low residency. Mandatory three weeks on campus each June, followed by online asynchronous classes the rest of the year. Estimated commitment of 10–12 hours a week.



#### Alumni profiles

### Seray Sener & Alan Rheume

The on-campus portion of Harvard Chan School's hybrid MPH-EPI program is known to be intense—and intensely rewarding. It certainly was for Seray Sener and Alan Rheume, both MPH '24.

Sener, who worked for Pfizer in Turkey, and Rheume, who was a neurosurgery resident in Canada, gravitated toward the program in the hopes of mastering quantitative skills to make a broader impact in their fields.

The program paid off for their careers: Sener just took a job as global director of oncology at Pfizer, and Rheume is moving into a combined role as a neurosurgeon and an academic researcher at Stony Brook University Hospital.

It paid off for their personal lives, too.

“We found we have this shared mission together, as well as a personal connection and similar values,” Rheume said.

In other words: They fell in love—and got engaged. They've invited several faculty and staff members and their entire MPH-EPI cohort to the wedding.

*“The MPH program in clinical effectiveness has introduced me to new subjects, such as qualitative research and implementation science, which I am now incorporating into my ongoing research. I am a more capable and well-rounded investigator because of this program.”*

—Kendra Wulczyn, MPH '24

#### Alumni profiles

**Mediget Teshome, MPH '10**, recently took on the role of chief of breast surgery and director of breast health at UCLA Health, where she will oversee a multidisciplinary team working in clinical practice, research, and training. Teshome calls her work “a true privilege.”

**Jesse Ehrenfeld, MPH '09**, has worn many hats as he's worked to bridge the gap between medicine and public health: anesthesiologist, teacher, LGBTQ+ advocate, researcher, and leader of a major health philanthropy. His latest role: president of the American Medical Association. Ehrenfeld's work includes raising awareness of and support for public health by rallying physicians to serve as advocates.



Alumni profiles

## Ivan Hsiao

Ivan Hsiao, MPH '24, estimates that they have spent more than 600 hours navigating the complicated process of obtaining health care related to their gender transition. Now, they're working to simplify the process for patients and providers alike.

While studying for their MPH, Hsiao founded Trans Health HQ, a startup that offers a one-stop shop of clinical, legal, and expert resources to help providers care and advocate for their transgender patients.

Hsiao credits several faculty members for giving them a critical foundation in academic research, gender analysis, and epidemiology. And they took full advantage of advice and support from a flourishing ecosystem of social impact entrepreneurs at Harvard.

Harvard Chan School “feels like a base camp for me to return to, in order to keep climbing this mountain,” Hsiao said. “I’ve found people who are on the same page about social justice as a public health value that is at the heart of everything that we do.”



Watch Ivan Hsiao talk about their journey at Harvard Chan School  
[hsph.me/ivan-hsiao](https://hsph.me/ivan-hsiao)

# Master of Science

The Master of Science (SM) degree prepares students to address critical scientific and health challenges that affect the lives of individuals and entire populations. Candidates gain a powerful set of analytical, technical, and quantitative skills that can be applied in a wide range of career paths.

Graduates play leading roles in top academic and research institutions, pharmaceutical and biotechnology companies, health care organizations, national and international government agencies, nongovernmental organizations, and other public and private sector enterprises.

---

## SM 80-credit On campus Full-time

### ELIGIBILITY

For individuals with bachelor's degrees who want to better serve public health through research.

### PROGRAM LENGTH

Two years full-time

### FIELDS OF STUDY

Biostatistics • Computational Biology and Quantitative Genetics • Environmental Health  
• Epidemiology • Global Health and Population

---

## SM 60-credit On campus Full-time

### ELIGIBILITY

For professionals with bachelor's degrees in one of the mathematical sciences.

### PROGRAM LENGTH

1.5 years full-time

### FIELDS OF STUDY

Biostatistics • Health Data Science

---

## SM 42.5-credit On campus Full-time

### ELIGIBILITY

For established professionals with master's or doctoral degrees who are dedicated to improving health through quantitative research.

### PROGRAM LENGTH

One year full-time

### FIELDS OF STUDY

Biostatistics • Epidemiology • Health Policy and Management • Social and Behavioral Sciences



Alumni profiles

## Mostafa Al-Alusi

Since childhood, Mostafa Al-Alusi, SM '24, has had two passions: science and computers. Today, he is leveraging both those interests to improve heart health.

Al-Alusi, a cardiovascular fellow at Massachusetts General Hospital, has spent several years exploring how machine learning could predict the risk of heart disease. To advance this work, he enrolled in the Master of Science in Health Data Science program at Harvard Chan School.

“One of the best aspects of the program was the core curriculum,” Al-Alusi said. A required first-semester course on statistics, for instance, gave him a powerful new ability to critique the strengths and weaknesses of published research—and his own proposed studies.

For his capstone project, Al-Alusi developed a deep learning model trained to diagnose mitral valve prolapse. “It was exciting to walk away with new coding skills that allowed me to lead part of a research project normally overseen by someone with a more dedicated technical background,” he said.

Alumni profiles

Hana Hayashi, SM '12, SD '16, has launched two ventures in Japan to grapple with the country's rapidly aging population. Motivated by the obstacles to finding qualified care for her elderly grandparents, Hayashi has opened a home care clinic in her hometown, which aims to provide in-home treatment for 24 elderly patients. Hayashi is also using skills honed at Harvard Chan School to collect data and generate evidence to inform best practices, in hopes of supporting other home care clinics in Japan and around the world.

Kelechi Ohiri, MPH '02, SM '03, a passionate advocate for universal health coverage, was recently appointed director-general and CEO of the National Health Insurance Authority in Nigeria, a high-level government post. Ohiri, a primary care physician, has also served as senior adviser to Nigeria's ministers of health and finance. In 2022, he returned to Harvard Chan School to teach a public policy course as a Menschel Senior Leadership Fellow.

# Master in Health Care Management

The Master in Health Care Management (MHCM) degree is a unique program designed exclusively for mid-career physicians and dentists who are established in or moving into leadership roles in health care organizations. The program involves three weeks of intensive training in each of two summers, followed by five four-day weekends throughout the year.

Physician executives take what they learn on campus, apply the lessons in their day-to-day practice while employed full-time, and return to the program to share their successes and challenges with their cohort. The program is designed to encourage students to learn from each other's real-time work experiences.

---

## MHCM

On campus Low residency

### ELIGIBILITY

For mid-career physicians and dentists who are established in or moving into leadership roles.

### PROGRAM LENGTH

Two years low residency

# Doctor of Public Health

The Doctor of Public Health (DrPH) degree is a first-of-its-kind multidisciplinary degree that prepares students for high-impact leadership roles in public health and health care by providing them with management, communication, and leadership skills as well as advanced education in public health.

---

## DrPH

On campus Full-time

### ELIGIBILITY

For experienced professionals with a master's degree or doctoral degree and at least six years of full-time public health work or public service experience in a relevant discipline.

### PROGRAM LENGTH

Three years full-time

Alumni profiles

## Mrinalini Darswal

As an officer in the Indian Administrative Service, a high-ranking leadership role few women from her state had attained, Mrinalini Darswal, DrPH '24, faced hundreds of problems daily across multiple sectors—education, rural development, transportation, and more. Now she is focusing on the one closest to her heart: health.

Through intensive doctoral studies at Harvard Chan School, Darswal grounded herself in public health history, policy, research methods, and social sciences. She also learned current leadership best practices and engaged in essential self-reflection.

“We took a series of ‘personal mastery classes,’ which over the course of semesters asked us to look inward and think about who we are and who we want to be as leaders,” Darswal said, describing such work as new to her—and transformative.

Darswal intends to combine her decades of experience as a public servant with what Harvard Chan School taught her about solving problems holistically. As she put it: “I’m ready to come at my work better than ever.”



Alumni profiles

In March 2024, Amy Bantham, DrPH '20, published her first book, *Move to Live More*, which aims to help parents and caregivers understand how and why kids need to move to produce better health and developmental outcomes. The book builds on Bantham's work as the founder and CEO of a research and consulting firm that aims to help people live healthier, longer, more active lives.

*“I had no idea how to lead a department. I decided to embark on a serious program where I could get everything I needed to lead a big health care system. Life-changing.”*

— Shlomit Schaal, MHCM '13

# Doctor of Philosophy

Harvard's PhD programs in public health give students the research and analytical tools they need to advance scientific discovery and tackle a wide range of complex, large-scale public health problems. Students benefit from multidisciplinary collaborations across Harvard Chan School and Harvard University. All candidates complete a dissertation and hone their teaching and

research skills by working as a teaching fellow and/or research assistant.

PhD programs at Harvard University are administered by the Harvard Kenneth C. Griffin Graduate School of Arts and Sciences.

## PhD In person Full-time

### ELIGIBILITY

A bachelor's degree is required, with preference given to applicants with relevant work experience or prior graduate work.

### FIELDS OF STUDY

- Biological Sciences in Public Health
- Biostatistics
- Health Policy
  - The PhD in Health Policy is a collaborative program among six Harvard University schools, including Harvard Chan School.

### PROGRAM LENGTH

Four to seven years, depending on program

- Population Health Sciences, which includes:
  - Environmental Health
  - Epidemiology
  - Global Health and Population
  - Nutrition
  - Social and Behavioral Sciences

### Student profiles

In his previous job as a sustainability consultant, **Jahred Liddie, PhD '25**, studied the environmental impacts of everyday products, from concrete to yoga mats. He soon began wondering about their impacts on human health, too.

So Liddie left the consulting world for Harvard Chan School's PhD program in population health sciences, administered through the Harvard Kenneth C. Griffin School of Arts and Sciences. He's focused his research on PFAS, also known as "forever chemicals" because of their persistence in the environment.

Back when he was an undergraduate studying environmental engineering, Liddie learned about the disproportionate levels of PFAS water contamination in predominantly Black and Hispanic communities.

Now in his doctoral work, Liddie is looking at drinking water to see if concentrations have changed over time. His goal: to drive action and save lives. "I hope that my work can help shape policy that will minimize the risks from PFAS and other environmental health hazards," he said.





# Joint and combined degrees

Students can earn a Master of Public Health degree in conjunction with another degree at another school. For all joint and combined programs, students undertake the residential MPH 45-credit program.

Explore the options  
[hsph.me/joint-degrees](https://hsph.me/joint-degrees)



---

## MD/DO/MPH Combined Degree Program

Harvard Chan School offers the opportunity to complete an MPH to medical students currently enrolled in LCME-accredited MD or DO programs in the U.S. or Canada.

---

## DMD/DDS/MPH Combined Degree Program

Harvard Chan School offers the opportunity to complete an MPH to dental students currently enrolled in LCME-accredited DMD or DDS programs in the U.S. or Canada.

---

## Joint JD/MPH Program *with Harvard Law School*

Students accepted to Harvard Law School may simultaneously pursue an MPH. Prospective students should apply to the joint degree program during their first semester at Harvard Law School.

# Non-degree programs



# Non-degree programs

Harvard Chan School offers numerous fellowships and special programs designed for clinicians, researchers, and public health professionals at every stage of their careers.

Explore the options  
[hsph.me/non-degree-programs](https://hsph.me/non-degree-programs)



---

## Program in Clinical Effectiveness

This intensive 15-credit summer program provides clinical investigators with fundamental training in clinical epidemiology and biostatistics. It is a joint program of Brigham and Women's Hospital, Massachusetts General Hospital, Harvard Medical School, and Harvard Chan School.

Learn more  
[hsph.me/PCE](https://hsph.me/PCE)



---

## Summer Session for Public Health Studies

These courses are designed for health professionals in training or those who are considering a mid-career change into public health. Summer session courses aim to strengthen students' skills in fields such as biostatistics, medical informatics, or research involving large databases.

Learn more  
[hsph.me/summer-PHS](https://hsph.me/summer-PHS)



---

## Global Health Delivery Intensive

This summer program is designed for mid-career global health professionals who seek training in how to effectively design and manage programs that improve health care delivery and outcomes.

Learn more  
[hsph.me/GHDI](https://hsph.me/GHDI)



---

## Harvard Global Public Health for Nurse Leaders

This online certificate program consists of courses in strengthening health systems, managing population health, and reforming policies and regulations to improve health care access. It is designed for national chief nurses, midwives, regulators, professional nursing and midwifery association executives, and academic deans and faculty.

Learn more  
[hsph.me/HGNLP](https://hsph.me/HGNLP)



# Summer programs

Our summer programs are designed for college students and recent graduates who are considering careers in public health.

Hear from summer program students and alumni  
[hsph.me/PH-summer-programs](https://hsph.me/PH-summer-programs)



---

## Summer Internship in Biological Sciences in Public Health

This intensive eight-week, laboratory-based biological research program is for rising junior or senior undergraduates who are interested in solving important public health problems. Up to six internships are awarded each year.

Learn more  
[hsph.me/summer-bio](https://hsph.me/summer-bio)



---

## FACETS

The Fostering Advancements and Careers Through Enrichment Training in Science program offers research training, courses, and networking opportunities to increase participants' competitiveness for graduate school admissions.

Learn more  
[hsph.me/FACETS](https://hsph.me/FACETS)



---

## Summer Program in Biostatistics and Computational Biology

This six-week program offers undergraduate students an opportunity to learn alongside Harvard faculty, researchers, and graduate students about the use of quantitative methods for biological, environmental, and medical research.

Learn more  
[hsph.me/summer-bio-comp](https://hsph.me/summer-bio-comp)



---

## Research Intensive Summer in Epidemiology (RISE)

This six-week program integrates mathematics and quantitative methods with public health training to give undergraduates a solid foundation from which to pursue a career in epidemiology research or practice.

Learn more  
[hsph.me/RISE](https://hsph.me/RISE)



# Executive and Continuing Education

Directed and taught by Harvard faculty, our executive and continuing education programs encourage leadership development and provide the knowledge and skills professionals need to improve organizational performance and address critical problems in public health.

We offer programs in many areas, including health policy and organizational strategy, health and wellness, management and leadership, and occupational and environmental health and safety. Classes are engaging and interactive, with opportunities for network development.



Learn more about these programs

[hsph.me/exec-ed](https://hsph.me/exec-ed)



# Program details and policies



# Program eligibility

Our website offers detailed information about eligibility for our degree programs.



Explore your options  
[hsph.me/eligibility](https://hsph.me/eligibility)

## PHD APPLICATIONS

Students interested in Harvard's public health PhD programs need to apply through the Harvard Kenneth C. Griffin Graduate School of Arts and Sciences.



For more information about applying to PhD programs  
[gsas.harvard.edu/apply](https://gsas.harvard.edu/apply)

## SOPHAS APPLICATIONS

For the DrPH, SM, MHCM, and MPH degree programs, applicants must apply through SOPHAS, the centralized application for schools and programs of public health. It requires:

- A statement of purpose and objectives
- Three letters of reference
- Curriculum vitae (CV) or résumé
- Official transcripts/mark sheets from all postsecondary institutions\*
- SOPHAS application fee
- Standardized test scores\*\*

Some programs may require additional materials or interviews.

The SOPHAS application opens in late August and deadlines for submission vary by program. Start your



Start your SOPHAS application  
[sophas.aspph.org](https://sophas.aspph.org)

\* Applicants who have degree coursework from institutions outside the U.S. or from non-English-language institutions in Canada must submit a credential evaluation from World Education Services.

\*\* Test score requirements vary by academic program. Please visit [hsph.me/test-scores](https://hsph.me/test-scores) to learn if scores are required, optional, or not considered.

# Tuition and expenses

A Harvard Chan education is an investment in your future—and in the change you hope to make in the world.

Our online survey tool will help you quickly calculate the total cost of our full-time degree programs, including tuition, fees, and indirect expenses such as housing, food, and transportation. It takes less than a minute and you can save your results as a PDF.



Find your cost of attendance  
[hsph.me/cost](https://hsph.me/cost)

Harvard Chan School does not discriminate against individuals on the basis of race, color, gender identity, sex, sexual orientation, religion, age, national or ethnic origin, political beliefs, veteran status, or disability, including in admissions and financial aid decisions.

# Fund your education

Master's and DrPH students are eligible to apply for school-funded scholarships, which typically cover one-quarter to one-half of tuition. Loans, external grants, and student employment can also help cover costs. Regrettably, we are not able to provide scholarship assistance to all students or meet the full financial needs of all admitted students.

All PhD students are fully funded through the Harvard Griffin Graduate School of Arts and Sciences. Their awards cover tuition, health insurance, and a stipend for living expenses. PhD students seeking more information should visit the Harvard Griffin GSAS Financial Aid Office.



Learn more about financial support for PhD students

[hsph.me/phd-support](https://hsph.me/phd-support)

## FINANCIAL AID APPLICATIONS

### Harvard Chan School Grant/Scholarship Application:

A short form that must be completed by early January to be considered for need-based and/or merit-based funding. Within eligible programs, all students, including domestic, international, and undocumented, are encouraged to apply. Applicants will not be considered for assistance unless a financial aid application is completed.

### Free Application for Federal Student Aid (FAFSA):

Domestic students—defined as U.S. citizens and permanent residents, citizens of freely associated states, refugees, and persons granted asylum—need to complete the FAFSA to be eligible for federal loans and/or federal work-study.



Learn more about the financial aid process and options for funding your education

[hsph.me/financial-aid](https://hsph.me/financial-aid)

## ADDITIONAL SUPPORT

Harvard Chan School provides additional support to students beyond financial aid. Examples include:

- The Daily Dollar Meal offers breakfast and lunch options in the School's café every weekday for \$1.
- The Student Hardship Fund provides funds to degree candidates with unexpected financial burdens. Students do not need to repay these funds.
- The Professional Development Support Fund helps students cover some of the costs of attending or presenting at professional conferences.
- Regular "Freecycle" events enable community members to give away or pick up clothes, books, and household items in good condition.
- Workshops on financial health help students learn about budgeting, loan forgiveness programs, and other personal financial management skills.



# Policies and disclosures

## NONDISCRIMINATION

In accordance with Harvard University policy, Harvard T.H. Chan School of Public Health does not discriminate against any person on the basis of race, color, sex, sexual orientation, gender identity, religion, age, national or ethnic origin, political beliefs, veteran status, or disability in admission to, access to, treatment in, or employment in its programs and activities.

The associate dean for student services (617-432-4703) has been designated to handle inquiries regarding the nondiscrimination programs. In addition, inquiries concerning nondiscrimination policies regarding race, color, national origin, age, sex, or disability may be referred to:

Regional Director  
U.S. Department of Education  
Office for Civil Rights  
8th Floor, 5 Post Office Square  
Boston, MA 02109-3901  
  
Phone: 617-289-0111  
Fax: 617-289-0150  
Email: [OCR.Boston@ed.gov](mailto:OCR.Boston@ed.gov)

## DISABILITIES

The University, in accordance with its obligations under the Americans with Disabilities Act and Section 504 of the Rehabilitation Act of 1973, does not discriminate against qualified individuals with disabilities in admission or access to programs and activities.

The Office for Student Affairs assists all students with learning, manual, mobility, hearing, visual, and other disabilities. To learn more, contact Student Support at [studentsupport@hsph.harvard.edu](mailto:studentsupport@hsph.harvard.edu) or visit [hsph.me/support-services](http://hsph.me/support-services)

## SAFETY INFORMATION FROM HARVARD UNIVERSITY POLICE DEPARTMENT

The University is required by federal law (The Jeanne Clery Disclosure of Campus Security Policy and Campus Crime Statistics Act, 20 U.S.C. 1092[f], known as the “Clery Act”) to publish an Annual Security Report and an Annual Fire Safety Report. The reports are available at [hsph.me/safety](http://hsph.me/safety)

## TITLE IX

Consistent with Title IX of the Education Amendments of 1972, Harvard University does not discriminate against students, faculty, or staff based on sex in any of its programs or activities, including but not limited to educational programs, employment, and admission. Sexual harassment, including sexual violence, is a kind of sex discrimination and is prohibited by Title IX and by the University. Harvard also complies with Massachusetts laws that protect individuals from discrimination on the basis of sexual orientation, as well as on the basis of gender identity.

Questions or concerns about possible discrimination based on sexual orientation and/or gender identity under state law may also be directed to a school or unit Title IX coordinator, or to the University’s Title IX Office.

The University is committed to responding promptly and effectively when it learns of any form of possible discrimination based on sex. The University responds to reports of sexual harassment, including sexual violence, as part of its efforts to stop the harassment and prevent the recurrence of possible sex discrimination.

To learn more, visit the Harvard University Title IX Office website, [hsph.me/title-ix-office](http://hsph.me/title-ix-office)

For information on Harvard Chan School’s Title IX coordinators, visit [hsph.me/title-ix-coordinators](http://hsph.me/title-ix-coordinators)

## UNIVERSITY ADVISORY ON COMPLIANCE WITH COPYRIGHT LAW AND DIGITAL MILLENNIUM COPYRIGHT ACT

Harvard University is committed to maintaining the integrity and availability of the Harvard network for the vital educational and research purposes for which it was designed and prohibits the use of its network to violate the law, including the U.S. Copyright Act. For more information, visit [dmca.harvard.edu/pages/annual-copyright-disclosure](http://dmca.harvard.edu/pages/annual-copyright-disclosure)

## STATE AUTHORIZATION RECIPROCITY AGREEMENT

Harvard is authorized to offer distance education under the State Authorization Reciprocity Agreement (SARA), an agreement that allows institutions of higher education in Massachusetts to offer distance education to students residing in other states that participate in SARA. For information about SARA-related student complaint processes for distance education students, please see <https://vpal.harvard.edu/nc-sara>







**HARVARD T.H. CHAN**  
SCHOOL OF PUBLIC HEALTH

**OFFICE OF ADMISSIONS**

158 Longwood Avenue  
Boston, MA 02115-5810

+1 617-432-1031

[hsph.harvard.edu/admissions](https://hsph.harvard.edu/admissions)

